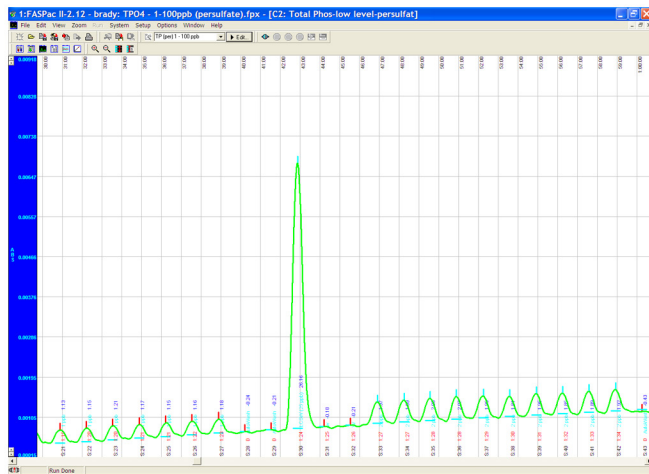


# Total Phosphorus A050 (Persulfate digestion)

## Example 1 - Range: 0.001- 0.10 mg/L

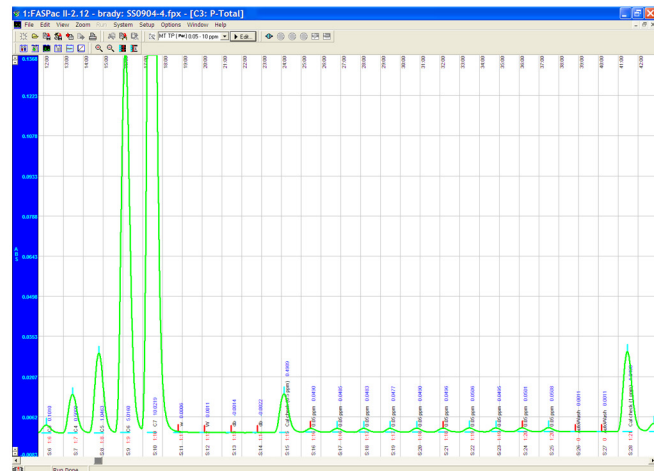


### TP (per) A050-A05

Range: 0.001 - 0.10 mg/L  
MDL=0.0001 mg/L  
Analysis rate: 45 samples/hour

NOTE: 0.001 and 0.002 mg/L peaks are shown

## Example 2 - Range: 0.05 - 10 mg/L



### TP (per) A050-AMT

Range: 0.05 - 10 mg/L  
MDL=0.003 mg/L  
Analysis rate: 45 samples/hour